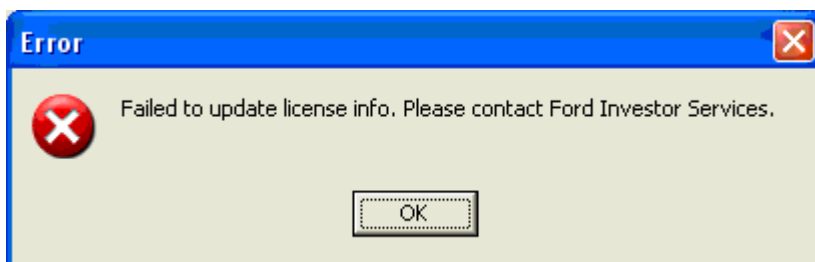


Ford Custom Graphs – Granting Rights to License Registry Key

Introduction

The Ford Custom Graphs license model requires access to the registry to write values upon startup. In some instances the user of the workstation does not have sufficient access rights and so an error message is generated and the user cannot access the software. These instructions explain how to grant access to the correct registry key for the user.

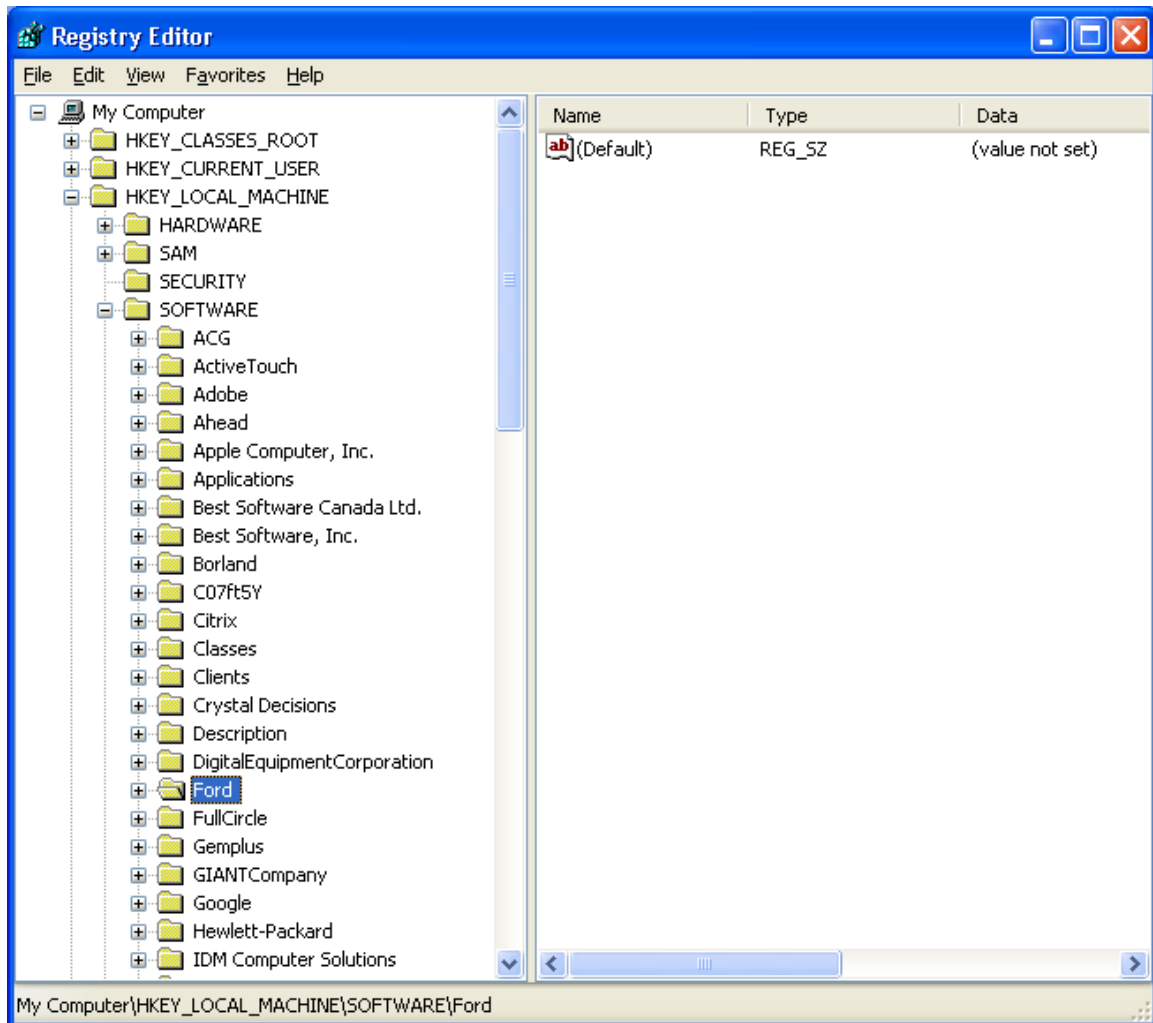


Prerequisites

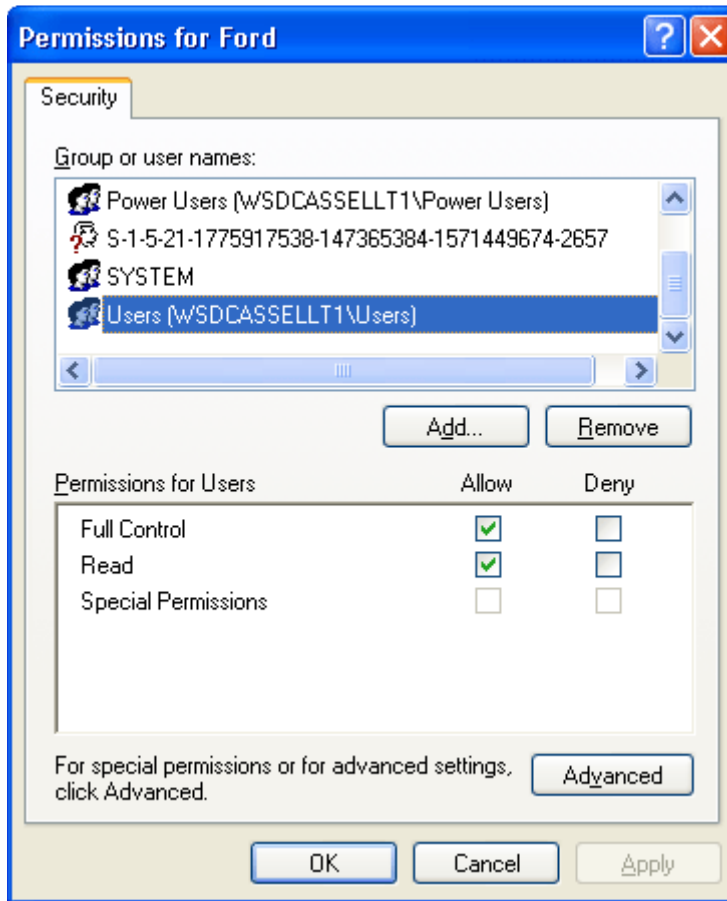
In order to complete these steps you must be able to log into the workstation as a Windows user with administrative rights on the workstation.

Granting Access Rights

1. Log onto the workstation as a user with Administrative rights.
2. Click in **Start, Run**, type in **regedit** and click **OK**.
3. In the registry editor navigate to HKEY_LOCAL_MACHINE\SOFTWARE\Ford



4. Right click on the *Ford* folder and select **Permissions...**
5. Select the Users group from the local machine Users (*machine name/Users*).
6. Put a check mark in the *Full Control* check box. Click **OK** to save the changes and then close the Registry Editor.



Testing the Settings

1. Log out of the administrative account and log in as the normal user.
2. Launch the Custom Graphs application. There should be no licensing error messages.